
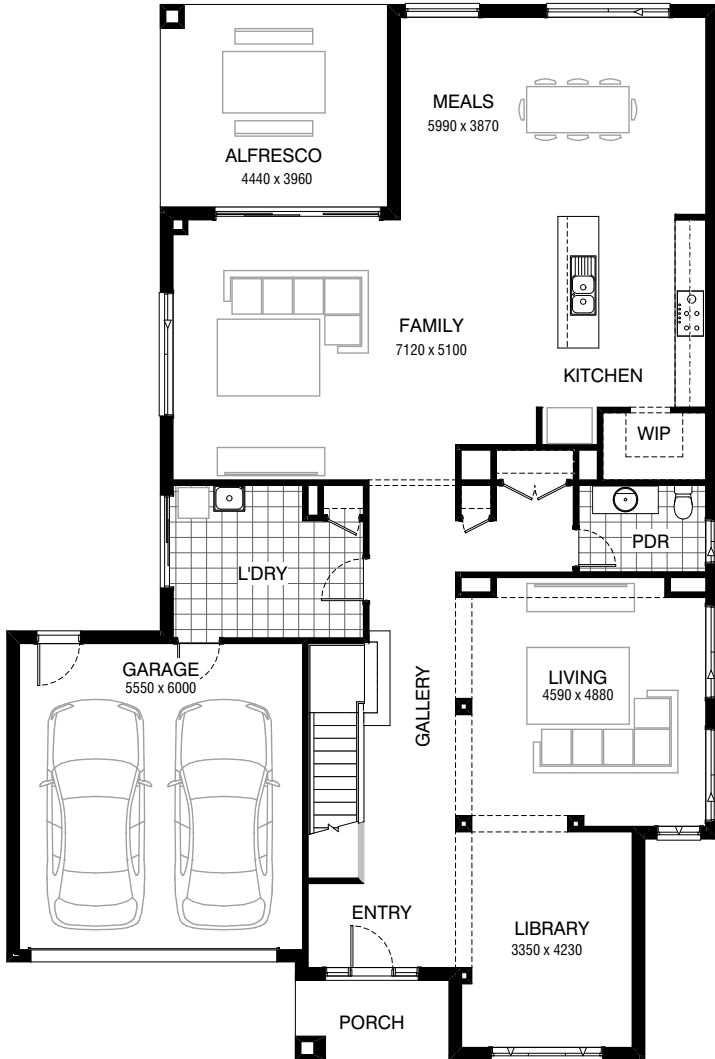
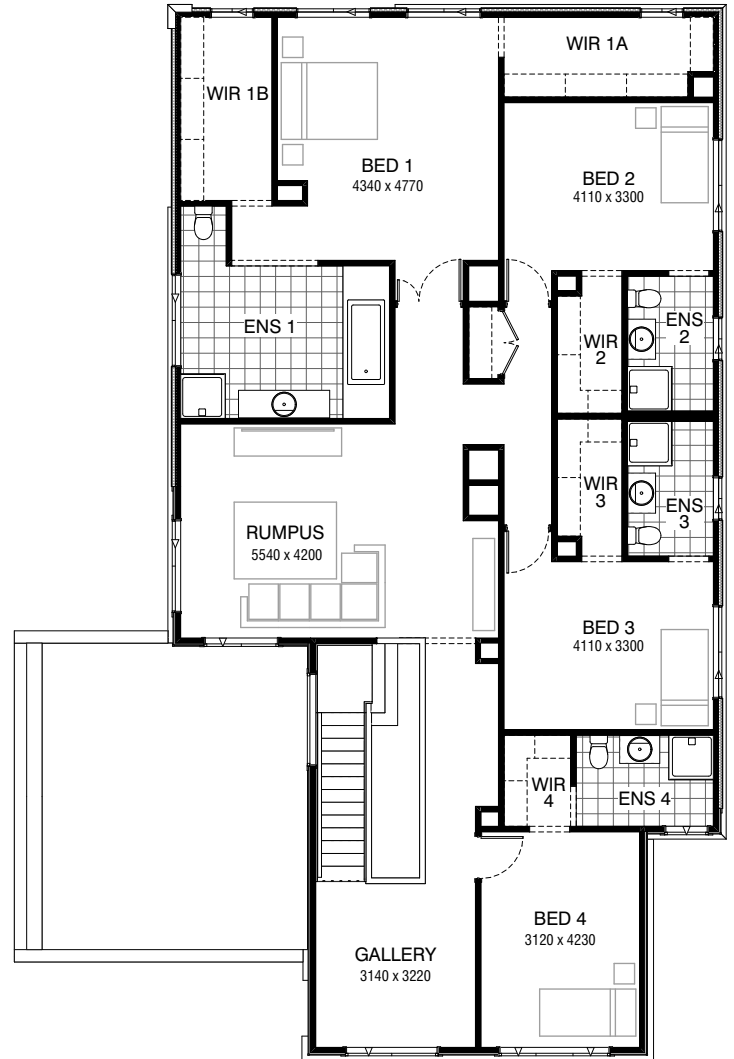


Total squares **45.4sq**

 **4**  **4.5**  **2**



GROUND FLOOR



FIRST FLOOR

FLOORPLAN OPTIONS

All available ready-to-go floorplan options for this design can be viewed on the following pages, or visit www.burbank.com.au.

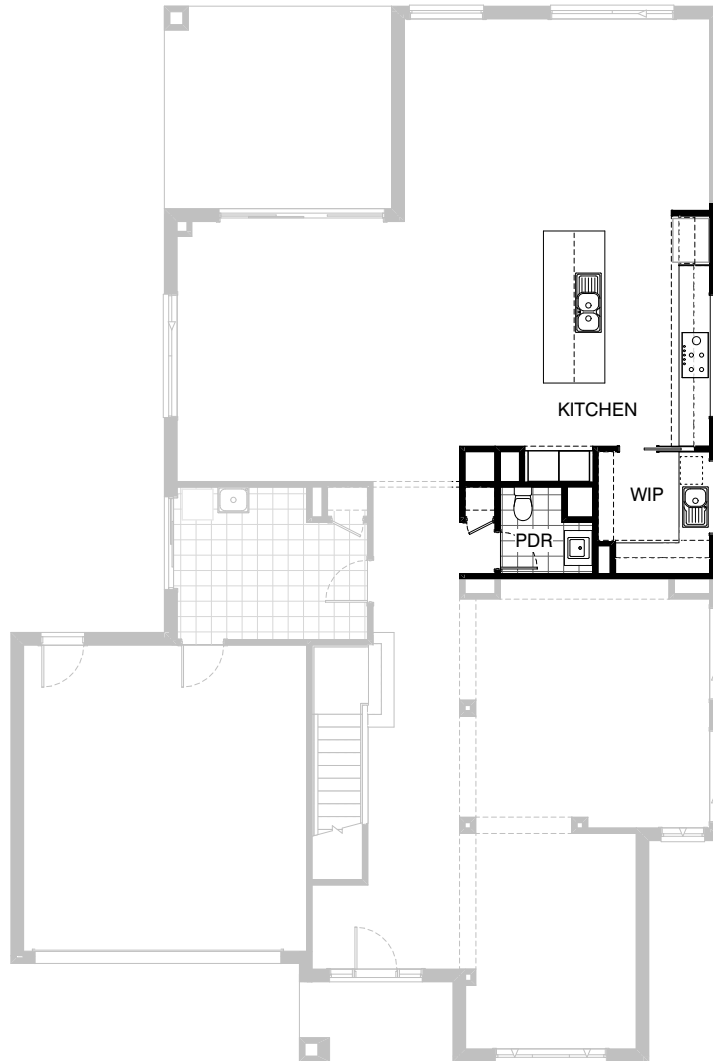
Facades available:

Condor, Matisse, Monet, Aqua	Residence	362.5m ²	39.0sq
Hester, Metropolitan, Orana	Garage	36.8m ²	4.0sq
Rainforest	Porch	4.7m ²	0.5sq
Overall home width	13.91m	Alfresco	17.6m ² 1.9sq
Overall home length	20.63m	Total	421.6m² 45.4sq

Listed details based on Condor façade floorplan (illustrated)

FLOORPLAN OPTIONS

 **4**  **4.5**  **2**

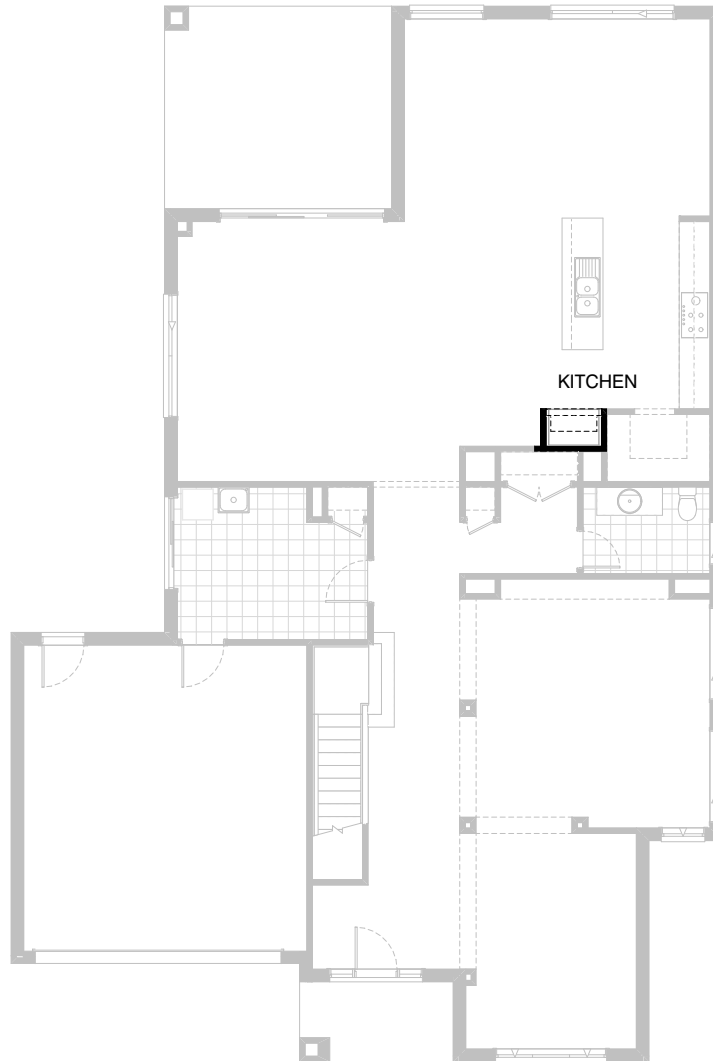


Option K-1

Provide Kitchen and Butlers Option and relocate Powder and delete Linen cupboard to suit. Provide additional 4no. 300mm deep shelves, 2no. 900mm overhead cupboards, 1no. 900mm base cupboard, 1no. 900mm corner cupboard, 1no. 800mm base cupboard, 1no. laminated microwave provision, 300(D) plaster bulkhead and 1no. aluminium 1543mm x 1450mm fixed window with no bottom reveal to Butlers Pantry. Provide additional 6no. 900mm base cupboards, 1no. DW provision, 1no. 450mm drawers, 1no. 450mm base cupboard, 1no. laminated fixed rear panel to island bench, 2no. 400mm base cupboards, 2no. 400mm overhead cupboards, 2no. 900mm overhead cupboards, 1no. 900mm hotplate and 1no. 900mm retractable rangehood, 1no. laminated open shelf above refrigerator space, 2no. wall oven towers with 4no. pot drawers below, 2no. wall ovens, 1no. coffee machine, 1no. steam oven and 2no. 600mm overhead cupboards. Additional 1no. 514mm x 2410mm aluminium with no bottom reveal with additional tiled splashback to Kitchen.

FLOORPLAN OPTIONS

 **4**  **4.5**  **2**

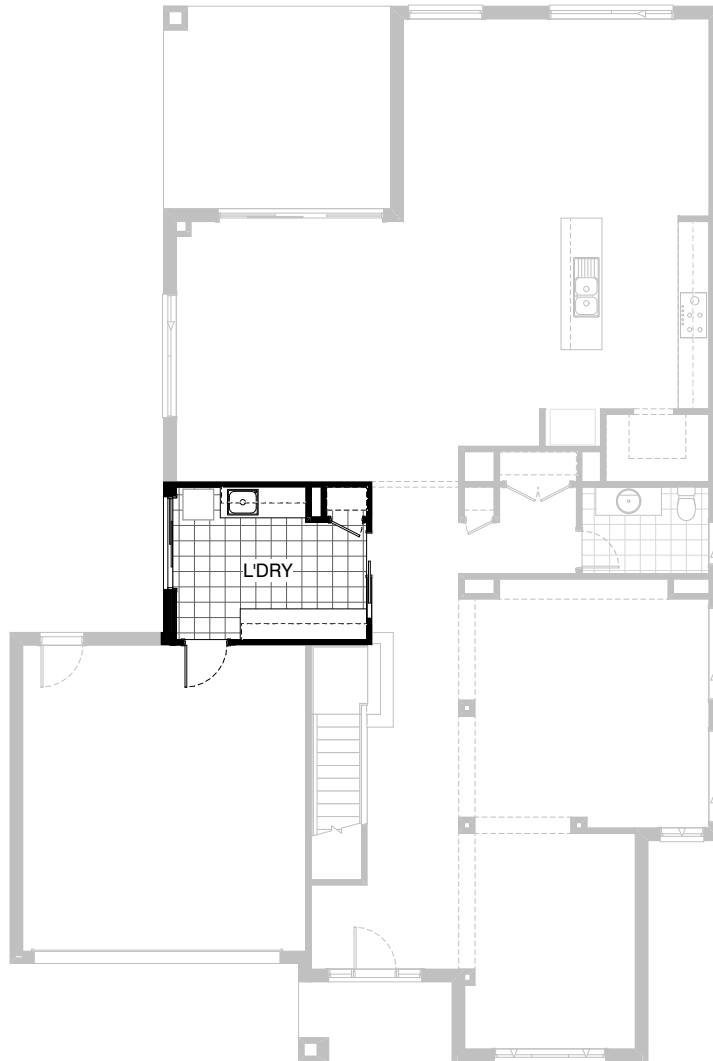


Option K-2

Provide Kitchen Option with additional laminated open shelf above refrigerator space.

FLOORPLAN OPTIONS

 **4**  **4.5**  **2**

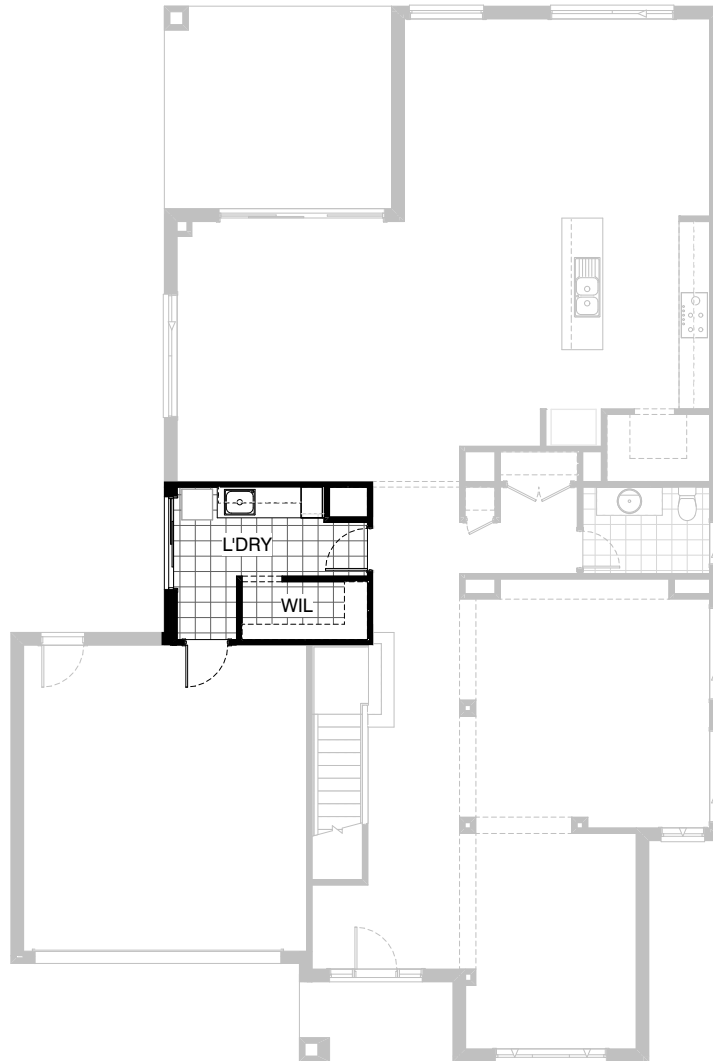


Option LD-1

Provide Laundry upgrade with 5no. 800mm overhead cupboards, 4no. 800mm base cupboards, 1no. 350mm base cupboard, 1no. 450mm wide drawers, additional tiled splash back and laminated bench top with 1no. 820mm sliding door in lieu of standard 1no. 820mm flush panel hinged door.

FLOORPLAN OPTIONS

 **4**  **4.5**  **2**

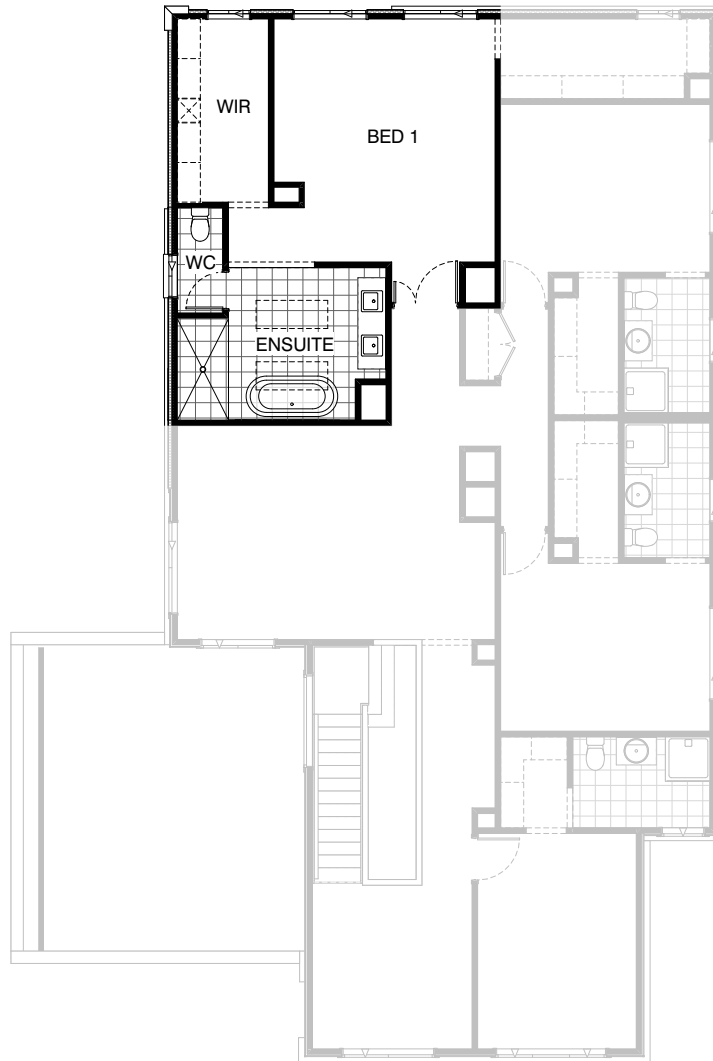


Option LD-2

Provide Laundry Option by relocating Laundry access door, delete 1no. site built broom cupboard and relocate plumbing stack to suit. Provide additional 1no. 400mm laminated broom cupboard with 1no. adjustable shelf, 2no. 800mm base cupboards, 2no. 800mm over head cupboards with pull open and additional tiled splashback and benchtop to suit. Provide additional plaster lined site built WIL with 1no. 800mm opening with plaster bulkhead over, 4no. 450mm deep shelves and 4no. 300mm deep shelves to suit.

FLOORPLAN OPTIONS

 **4**  **4.5**  **2**

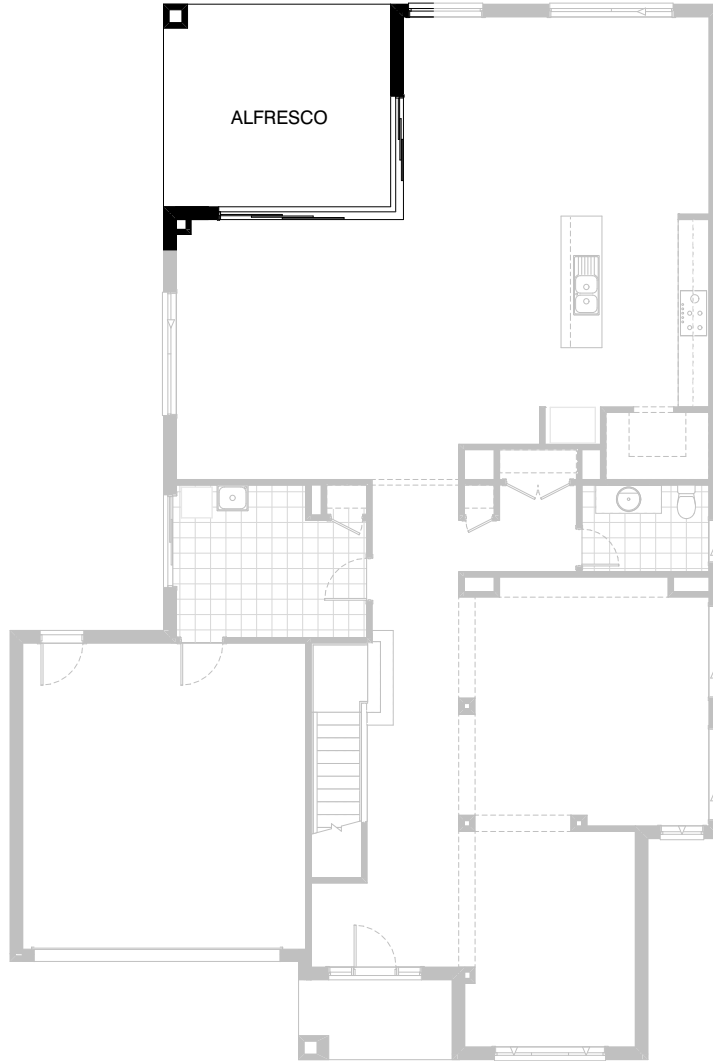


Option ENS-1 FF

Provide Ensuite option with plaster lined enclosed WC. Provide additional 1no. 720mm flush panel hinged door, 1no. 514mm x 850mm aluminium sliding window in lieu of 1no. 514mm x 1810mm aluminium sliding window, 1no. 2100mm x 1000mm tiled shower base, 2no. shower heads, 1no. free standing bath and additional 2no. Velux skylights (FS108) in lieu of standard. Delete plaster bulkhead to WIR 1 and relocate void to Bed 1/WIR 1 to Ensuite.

FLOORPLAN OPTIONS

 **4**  **4.5**  **2**

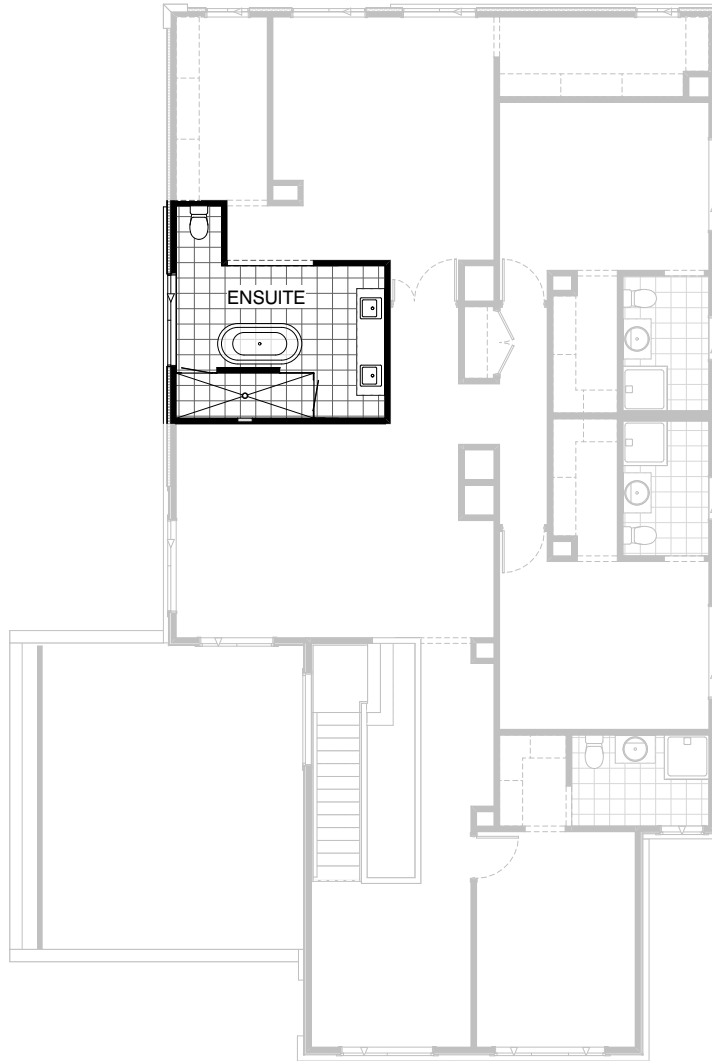


Option IP1-1

Provide 1no. ASCD 2397mm X 2410mm X 3610mm aluminium corner stacker doors to Family / Meals in lieu of standard.

FLOORPLAN OPTIONS

 **4**  **4.5**  **2**

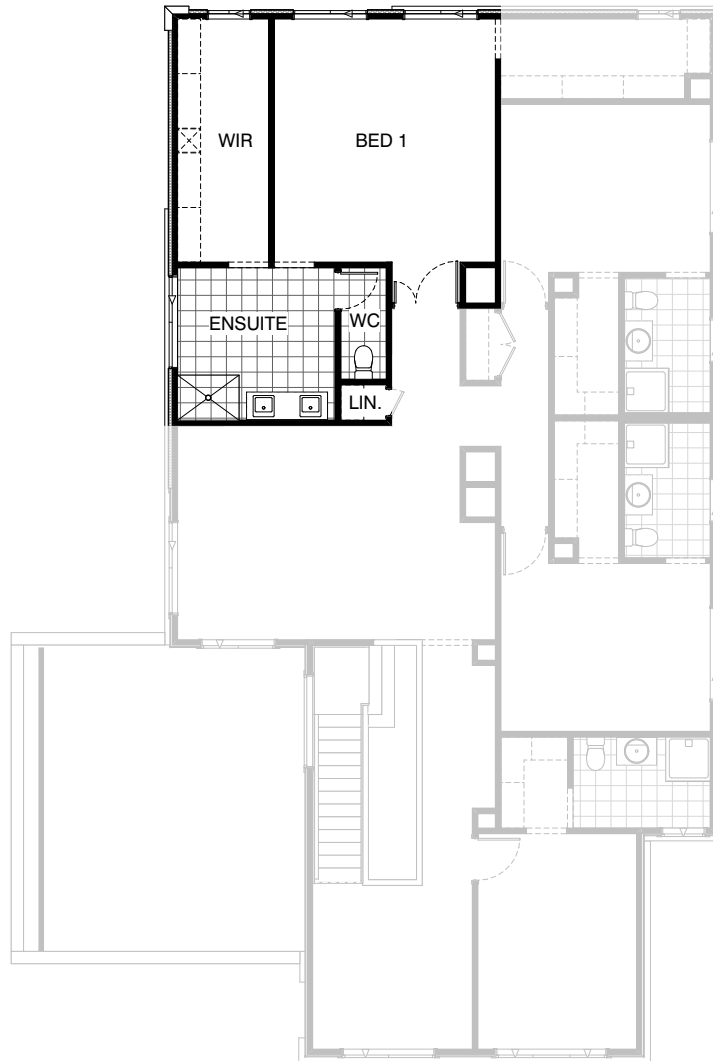


Option IP1-2 FF

Provide Ensuite upgrade including freestanding bath with 300mm spout, 2700mm x 900mm tiled shower base with 2no ceiling mounted shower roses, additional mixer tap, extended vanity with double basins, wall recess with 2no glass shelves and 2no frame less shower screens.

FLOORPLAN OPTIONS

 **4**  **4.5**  **2**

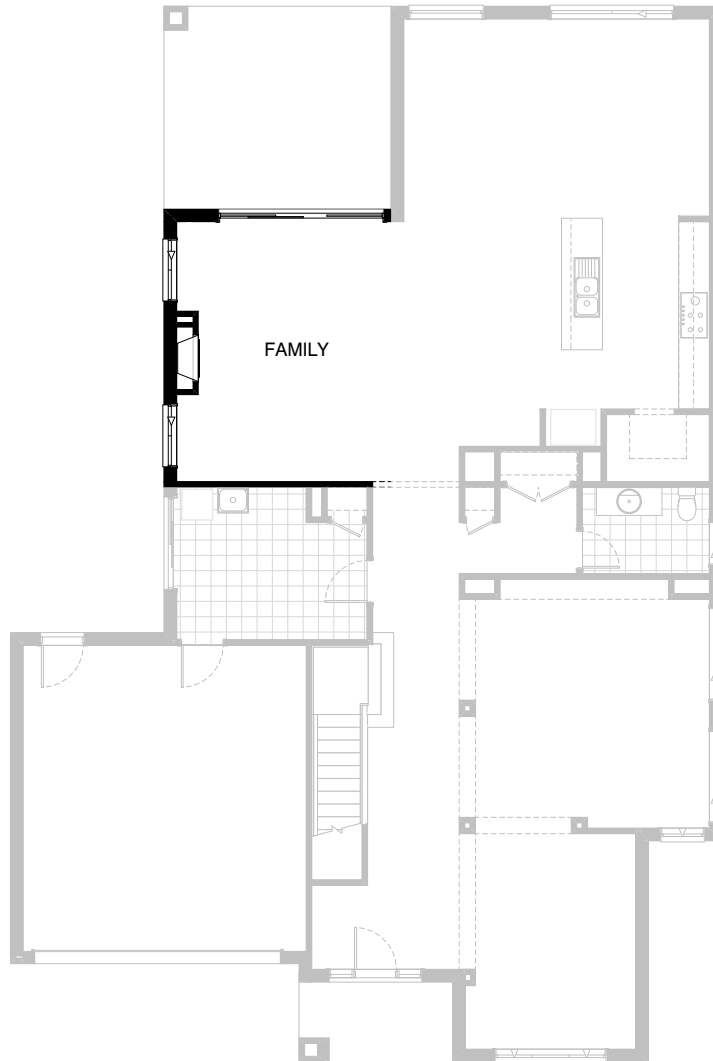


Option IP1-3 FF

Provide alternative Ensuite layout by deleting bath with hob and provide plaster lined enclosed WC with 1no. 720mm flush panel hinged door, plaster lined Store room with 1no. 520mm flush panel hinged door with access via passage and increased walk-in-robe including additional hanging rail and shelf and adjust Bed 1 and WIR openings to suit.

FLOORPLAN OPTIONS

 **4**  **4.5**  **2**

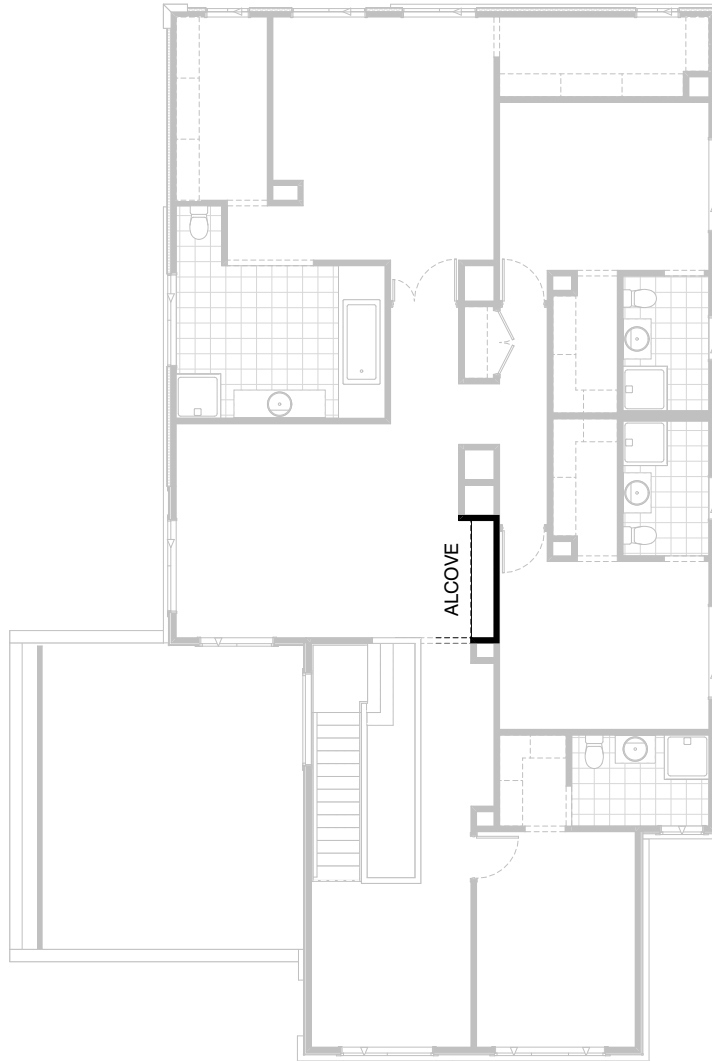


Option IP1-4 GF

Provide Jetmaster 3x Series gas fireplace, 400mm off floor level in a 1400mm x 420mm boxed out plaster wall with a 4 sided black fascia to Family room side wall with additional 2no. 2057mm x 1210mm aluminium sliding awning windows in lieu of standard 1no. 2057mm x 2400mm window.

FLOORPLAN OPTIONS

 **4**  **4.5**  **2**

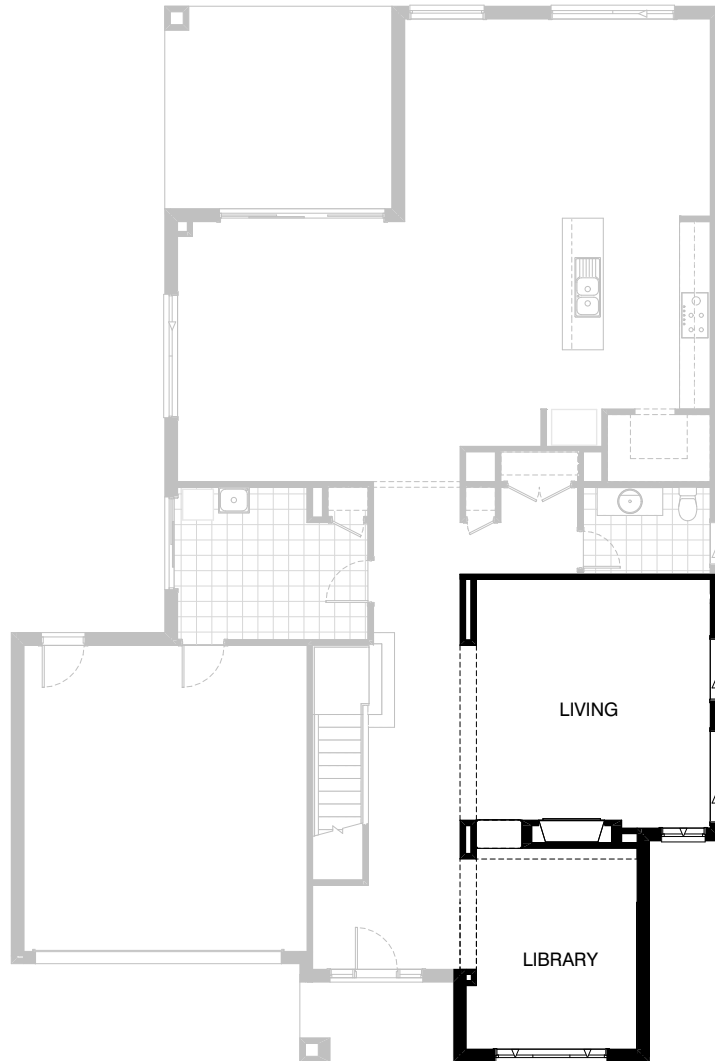


Option IP1-5 FF

Provide built-in seat option in lieu of Alcove with additional laminated panels and plaster bulkhead above.

FLOORPLAN OPTIONS

 **4**  **4.5**  **2**



Option IP1-6 GF

Provide Heat & Glo 'SLRX' Gas fire place, 520mm off floor level in a 1935mm x 530mm boxed out plaster wall to Living room wall with 1no. 2057mm x 1210mm aluminium sliding window in lieu of standard 1no. 2057mm x 1800mm aluminium sliding window to suit. Delete plaster bulkhead and 1no. void to Living and relocate plumbing stack to suit. Provide plaster wall cut-out to Living/Library with 3no. laminate shelving, plaster bulkhead to Library and delete 1no. plaster column to Living to suit. Provide additional fire place flue outlet void to Bedroom 4 and decrease Bedroom 4 length by 450mm to suit.

FLOORPLAN OPTIONS

 **4**  **4.5**  **2**



Option IP1-6 FF

Provide Heat&Glo 'XLR Plus' Gas fire place, 520mm off floor level in a 1935mm x 530mm boxed out plaster wall to Living room wall with 1no. 2057mm x 1210mm aluminium sliding window in lieu of standard 1no. 2057mm x 1800mm aluminium sliding window to suit. Delete plaster bulkhead and 1no. void to Living and relocate plumbing stack to suit. Provide plaster wall cut-out to Living/Library with 3no. laminate shelving, plaster bulkhead to Library and delete 1no. plaster column to Living to suit. Provide additional fire place flue outlet void to Bedroom 4 and decrease Bedroom 4 length by 450mm to suit.

FLOORPLAN OPTIONS

 **4**  **4.5**  **2**



Option IP1-7 FF

Provide 300mm deep plaster bulkhead with 5no. laminated shelves to Alcove First floor with laminate backboard and sides with 20mm shadowline.

FLOORPLAN OPTIONS

 **4**  **4.5**  **2**

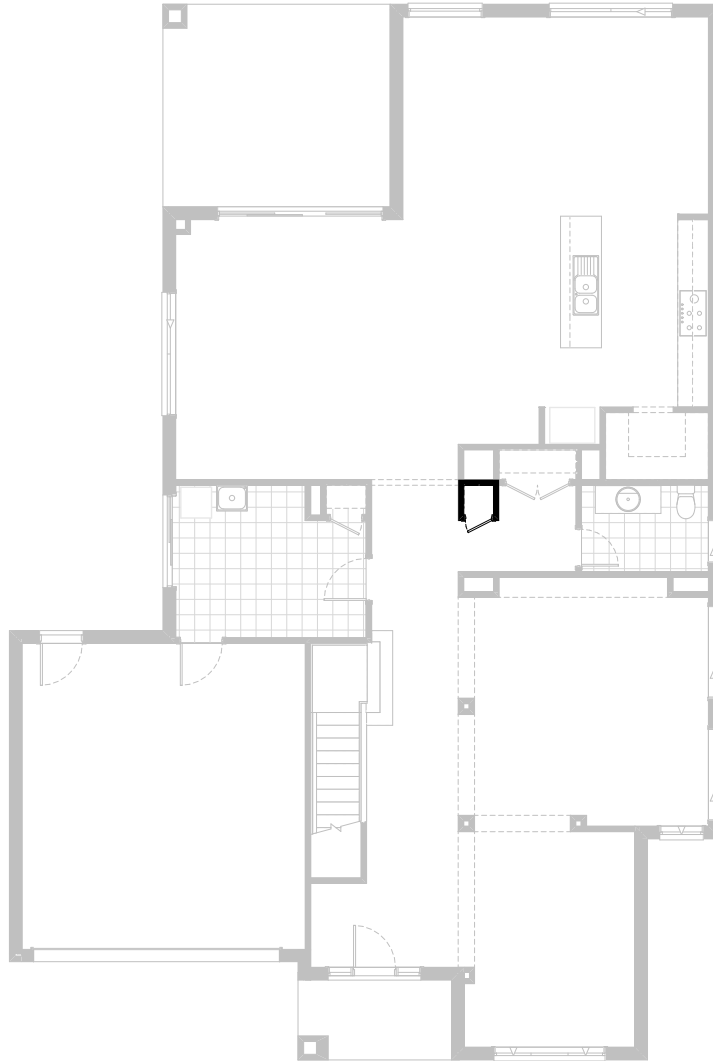


Option IP1-8 FF

Provide 300mm deep plaster bulkhead with 5no. shelving configured differently from IP1-7 FF to Alcove First floor with laminate backboard and sides with 16mm shadowline.

FLOORPLAN OPTIONS

 **4**  **4.5**  **2**

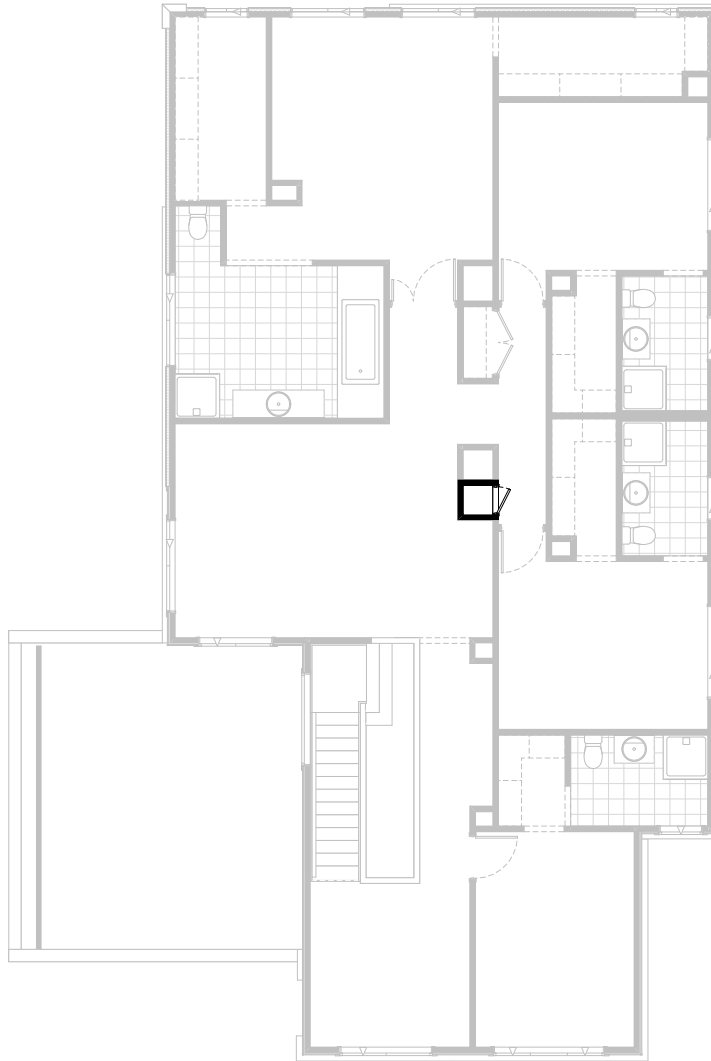


Option IP1-9 GF

Provide Laundry chute in lieu of Ground floor Broom cupboard and void space to first floor

FLOORPLAN OPTIONS

 **4**  **4.5**  **2**

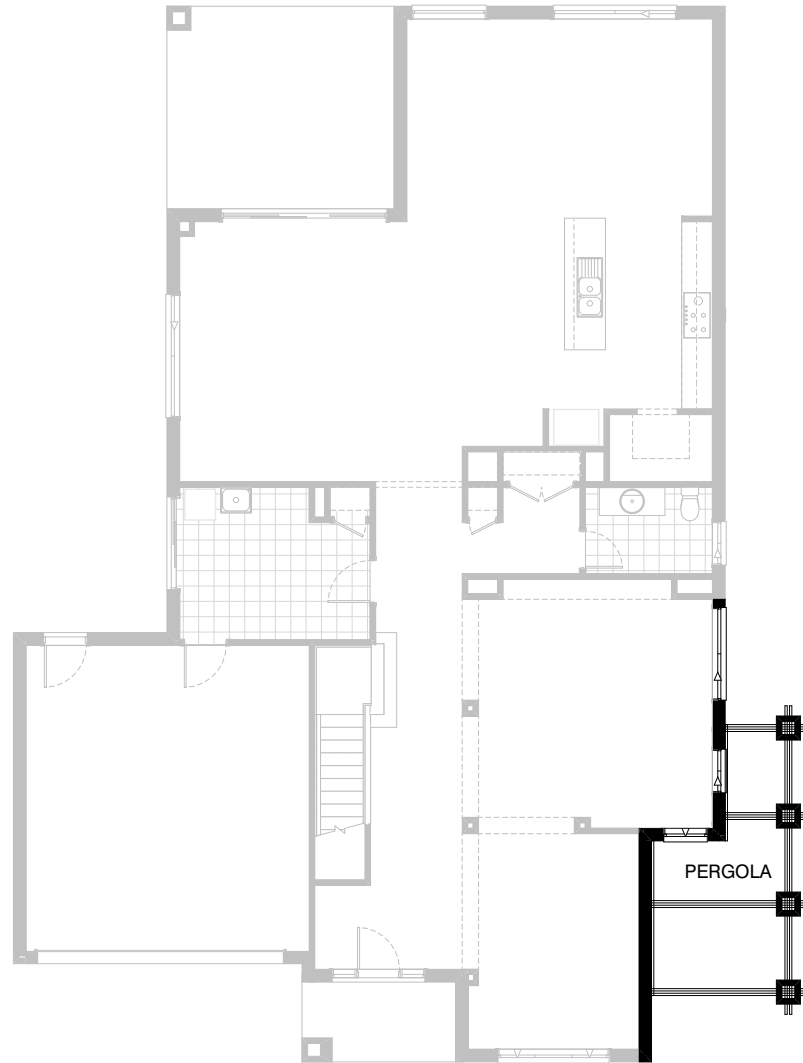


Option IP1-9 FF

Provide Laundry chute in lieu of Ground floor Broom cupboard and void space to first floor

FLOORPLAN OPTIONS

 **4**  **4.5**  **2**

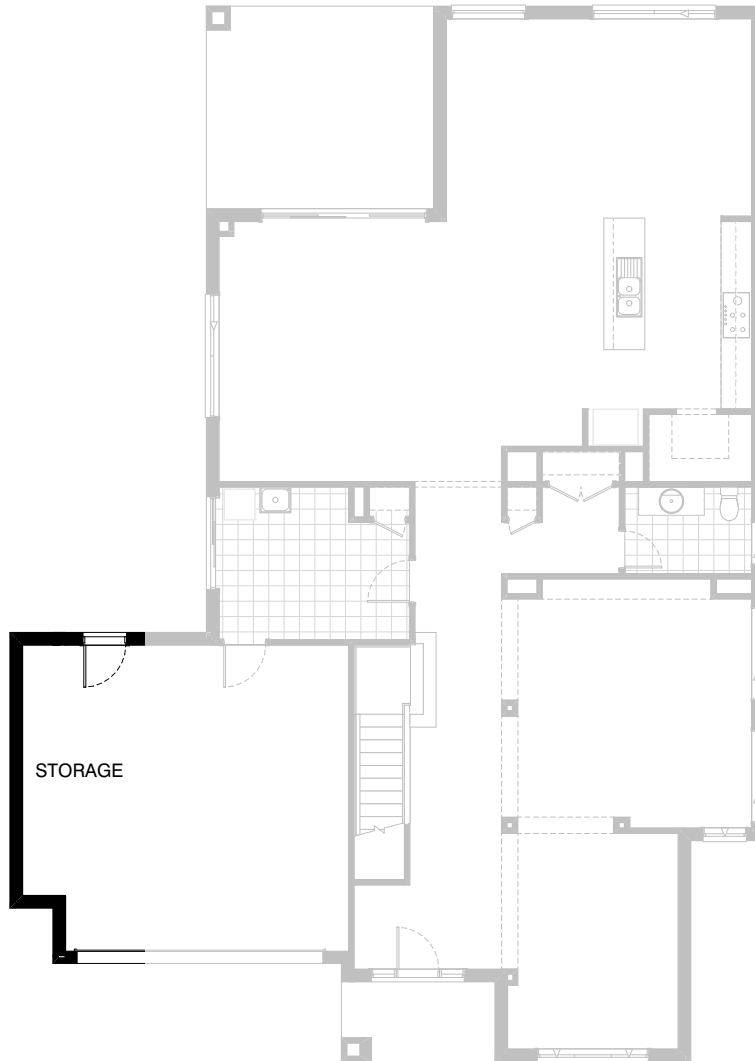


Option EP-1

Provide Timber Pergola to side of Library/Living with Render to brick piers and replace 1no. 2057mm x 1810mm aluminium sliding window to living to 1no. 2057mm x 850mm aluminium sliding window.

FLOORPLAN OPTIONS

 **4**  **4.5**  **2**

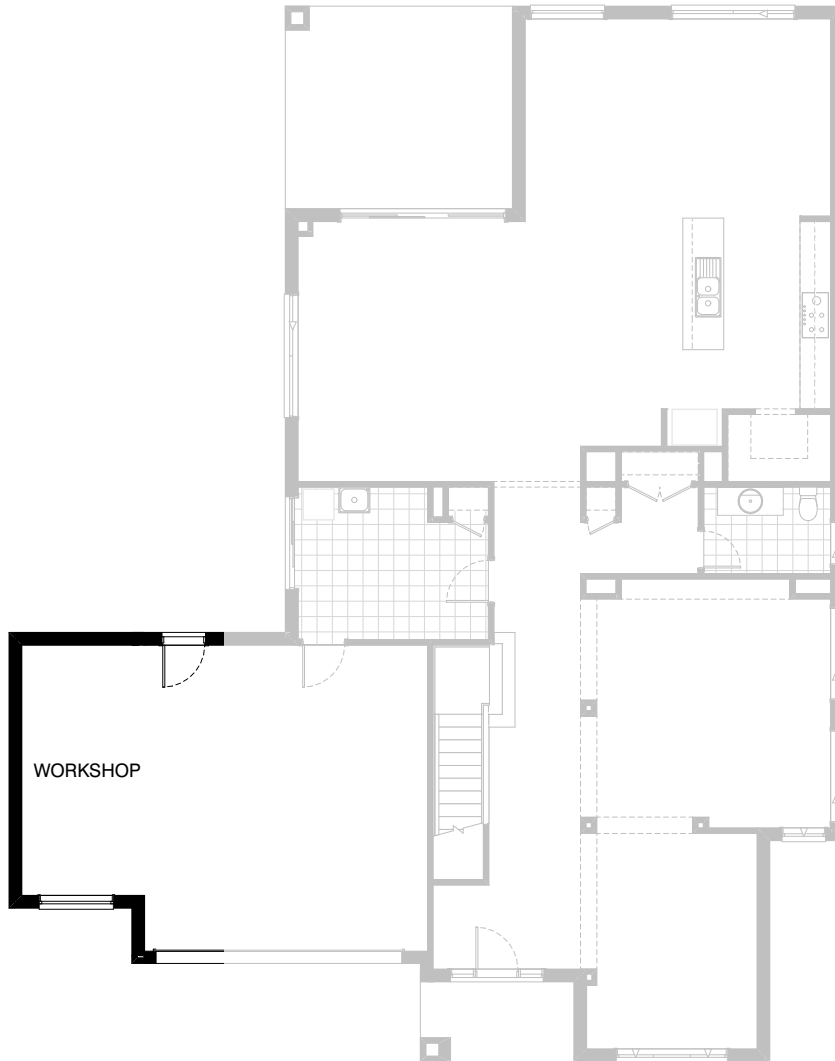


Option G-1

Provide extension to Garage to create additional Storage area.
(Option available to Facades with hip roof over Garage).
Increases area by 4.79m².
Increases width by 850mm.

FLOORPLAN OPTIONS

 **4**  **4.5**  **2**



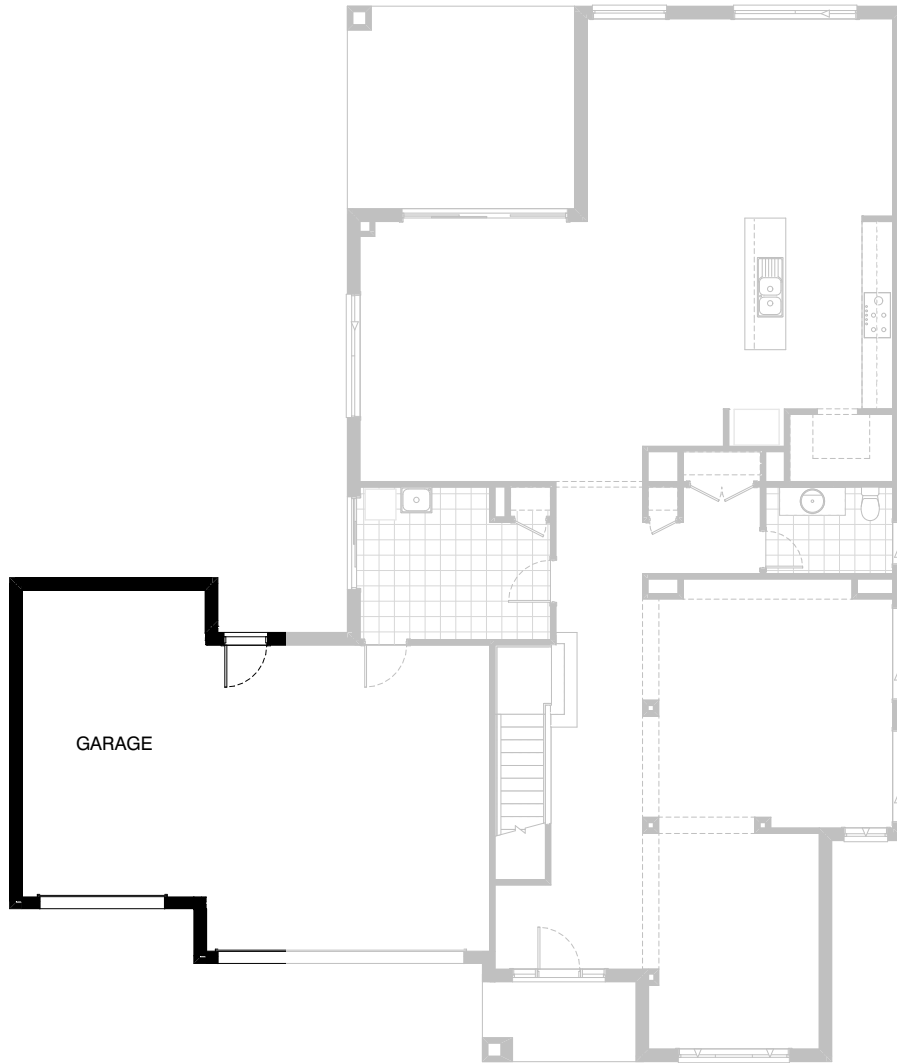
Option G-2

Provide extension to Garage to create Workshop area including additional 2057mm x 1450mm aluminium fixed window.
(Option available to Facades with hip roof over Garage).

Increases area by 12.94m².
Increases width by 2400mm.

FLOORPLAN OPTIONS

 **4**  **4.5**  **2**



Option G-3

Provide triple car Garage including additional Sectional door to front.
(Option available to Facades with hip roof over Garage).

Increases area by 23.79m².
Increases width by 3600mm.